

SI®/PAM

Flexible, IT-Based Maintenance and Operation Management

SI®/PAM is an IT-based computerized maintenance management system (CMMS) that allows to optimize all maintenance processes: from the planning via the control right up to the legal documentation.



System environment

SI®/PAM is designed for Microsoft operating systems and is executable as a standalone software application. To integrate the CMMS system into further IT applications, SI®/PAM is equipped with tried and tested interfaces.

Modular structure

SI®/PAM has a modular structure. Therefore the CMMS system can be applied across industries and will flexibly adjust to the respective operational requirements. For this, the system integrates a large selection of CMMS modules.

Overview: basic modules

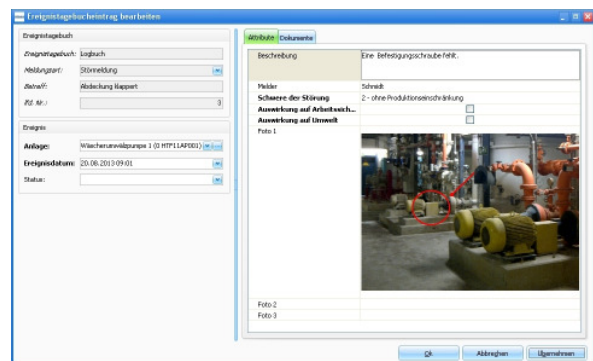
Already the basic modules of SI®/PAM cover all the required features like document management, reporting, and administration.

Tasks and deadlines

All jobs to be executed regularly are represented in this module as recurring items. Legally required activities in particular can be controlled and later proven this way.

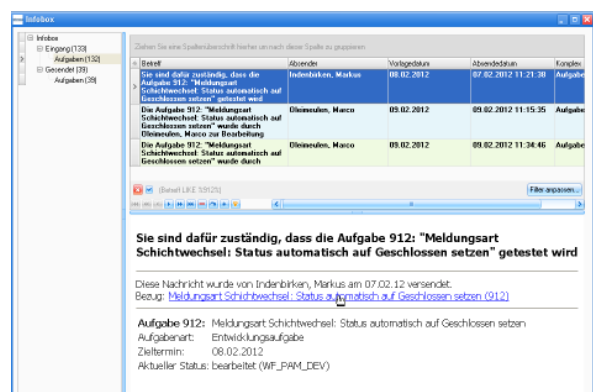
Event log

All unpredicted events and information that requires logging are saved here, and any number of 'event logs' can be created at will. The module can be used by various groups of persons e.g. for logs, shift logs, damage reports, etc.



Information box

Similar to an electronic mailbox, each user can be assigned an own 'information box' where all information relevant to him/her will be delivered.



SI[®]/PAM

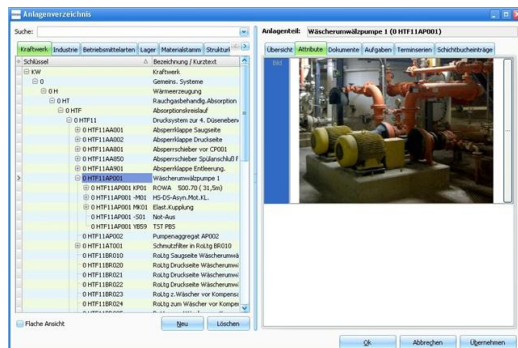
Flexible, IT-Based Maintenance and Operation Management

Document management

This is where all relevant documents are stored. Alternatively, documents stored outside of SI[®]/PAM can be linked with the document management. Documents can be added to each object; multiple linking of documents to different object types is possible as well.

Plant index

All component parts of the plant are represented in a clear tree diagram with an unambiguous name (key); any hierarchical structure can be chosen. In addition, a systematic encryption is possible, e.g. according to KKS or RDS-PP.



Administration

SI[®]/PAM comes in a standard configuration and can therefore be put to productive use in short order. If needed, SI[®]/PAM can be adjusted to customer-specific requirements.

Set-up of the master data

A couple of basic requirements have to be considered for the set-up of the master data.

Among those are

- the directory of existing components (plant assets),
- the component type index for the maintenance of technical data and standard maintenance schedules,
- the register of persons with the post list (supervisors, staff members, and deputies),
- the responsibilities of persons and their allocations for the use of standardized information paths,
- the central distribution of information via the 'information box'.

Unsere Informationen entsprechen unseren heutigen Kenntnissen und Erfahrungen nach unserem besten Wissen. Wir geben sie jedoch ohne Verbindlichkeit weiter. Änderungen im Rahmen des technischen Fortschritts und der betrieblichen Weiterentwicklung bleiben vorbehalten. Unsere Informationen beschreiben lediglich die Beschaffenheit unserer Produkte und Leistungen und stellen keine Garantien dar. Der Abnehmer ist von einer sorgfältigen Prüfung der Funktionen bzw. Anwendungsmöglichkeiten der Produkte durch dafür qualifiziertes Personal nicht befreit. Dies gilt auch hinsichtlich der Wahrung von Schutzrechten Dritter. Die Erwähnung von Handelsnamen anderer Unternehmen ist keine Empfehlung und schließt die Verwendung anderer gleichartiger Produkte nicht aus.

STEAG Energy Services GmbH | Rüttenscheider Str. 1-3 | 45128 Essen | Germany
 Dr. Martin Stephan | Phone: +49 201 801-4109
 E-mail: martin.stephan@steag.com
 www.steag-systemtechnologies.com